



Power Line Filters: QPL Listed to MIL-F-15733

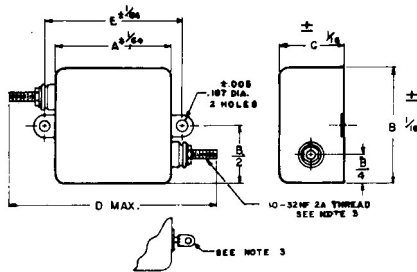
NOTES:

- All units are rated 125VAC, 400VDC, 0-400Hz
- Operating Temperature Range: -62°C—+85°C
- Temperature Rise: 25°C
- Maximum Voltage Drop: 0.5V
- Units rated less than 10A supplied with solder lug terminals

Single Circuit QPL to MIL-F-15733/4 Style FL53

DESIGNATION MIL-F-15733/4	FIL-COIL PART NO.	RATED CURRENT (AMPS)	INSERTION LOSS SYMBOL	DIMENSIONS				
				A	B	C	D	E
FL53DD1EA1	FC-279	1	D	1.750	1.250	.875	3.406	2.125
FL53ED1EA1	FC-279-1	3	D	2.000	2.000	.875	3.594	2.375
FL53FD1EA1	FC-279-2	5	D	2.000	2.000	1.125	3.594	2.375
FL53GD3KA1	FC-279-3	10	D	2.000	2.000	1.500	3.594	2.375
FL53HB3KA1	FC-279-4	15	B	2.500	2.000	1.500	4.094	2.938
FL53HD3KP1	FC-279-5	15	D	2.500	2.000	1.750	4.094	2.938
FL53LB3KA1	FC-279-6	30	B	2.500	2.000	2.125	4.094	2.938
FL53LD3KA1	FC-279-7	30	D	3.250	2.250	2.125	4.969	3.875
FL53NB3KA1	FC-279-8	55	B	3.188	2.250	2.125	4.906	3.812
FL53ND3KA1	FC-279-9	55	D	3.312	2.250	2.125	5.031	3.938

Frequency (MHz)	0.15	0.3	0.6	1	10	20	40	100	500	1000
Insertion Loss for symbol (dB)	B	40	50	60	60	60	60	60	60	60
	D	50	60	60	60	60	60	60	60	60



Full load insertion loss measurement shall be made from 0.15MHz to 20MHz

Above 20MHz insertion loss measurement shall be made under no-load per MIL-STD-220A

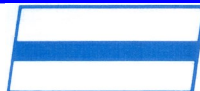
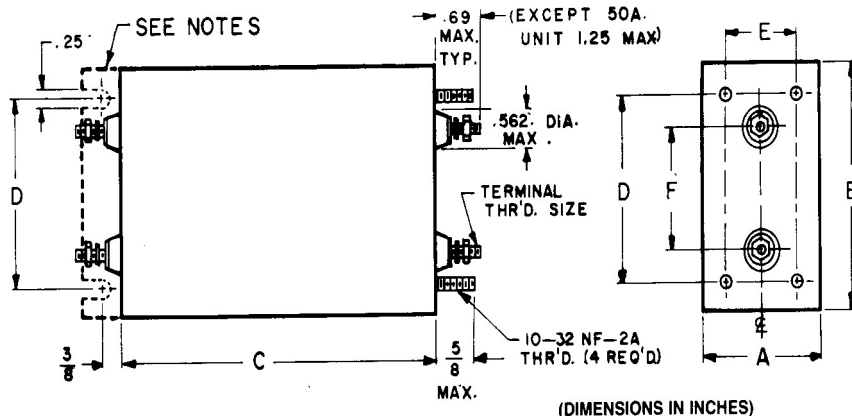
Dual Circuit QPL to MIL-F-15733/75

See graph on next page

MIL-F-15733/75 DASH NO	FIL-COIL PART NO	CURRENT RATING (AMPS)	±.03 A	±.03 B	±.03 C	±.02 D	±.015 E	±.03 F	TERMINAL THREAD SIZE	INSERTION LOSS GRAPH
.0001	FC-1220-1	2 x 3	1.13	2.25	3.58	1.750	.625	.75	8-32UNC-2A	B
.0002	FC-1220-2	2 x 3	1.50	3.00	4.94	2.500	1.000	1.50	8-32UNC-2A	A
.0003	FC-1220-3	2 x 5	1.25	2.50	4.71	2.000	.750	1.25	8-32UNC-2A	B
.0004	FC-1220-4	2 x 5	1.50	3.00	5.57	2.500	1.000	1.50	8-32UNC-2A	A
.0005	FC-1220-5	2 x 10	1.50	3.00	5.37	2.500	1.000	1.50	8-32UNC-2A	B
.0006	FC-1220-6	2 x 10	2.25	4.50	6.44	4.000	1.125	2.25	8-32UNC-2A	A
.0007	FC-1220-7	2 x 20	1.75	3.50	6.19	3000	1.250	1.75	8-32UNC-2A	B
.0008	FC-1220-8	2 x 30	2.25	4.50	6.08	4.000	1.750	2.25	10-32UNC-2A	B
.0009	FC-1220-9	2 x 50	2.25	4.50	6.94	4.000	1.750	2.25	1/4-20UNC-2A	B

NOTES:

- Voltage Rating: 115VAC, 400VDC, 0-400Hz
- Maximum Voltage Drop: 1% of rated voltage
- Dielectric Test: 2.5X rated voltage
- Operating Temperature: -55°C to +85°C
- Bracket supplied with units over 6 inches long

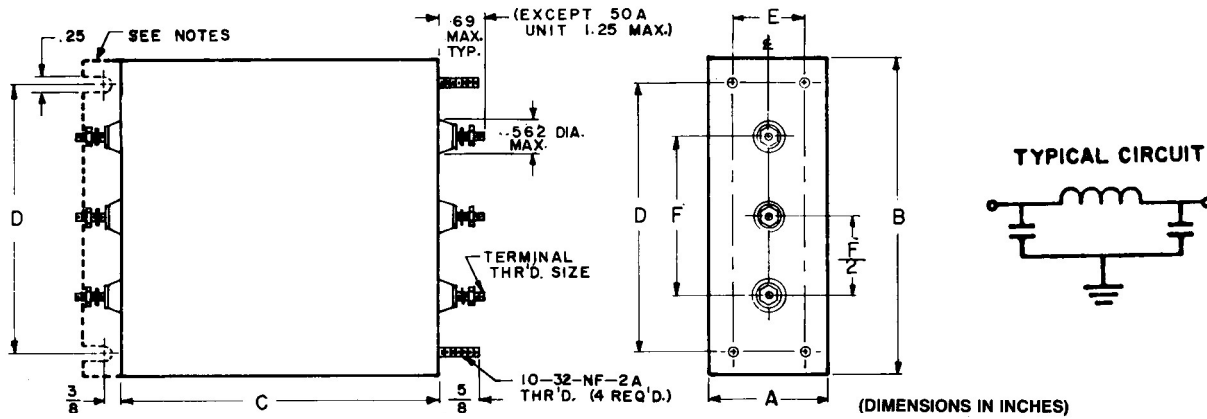




Power Line Filters: QPL Listed to MIL-F-15733

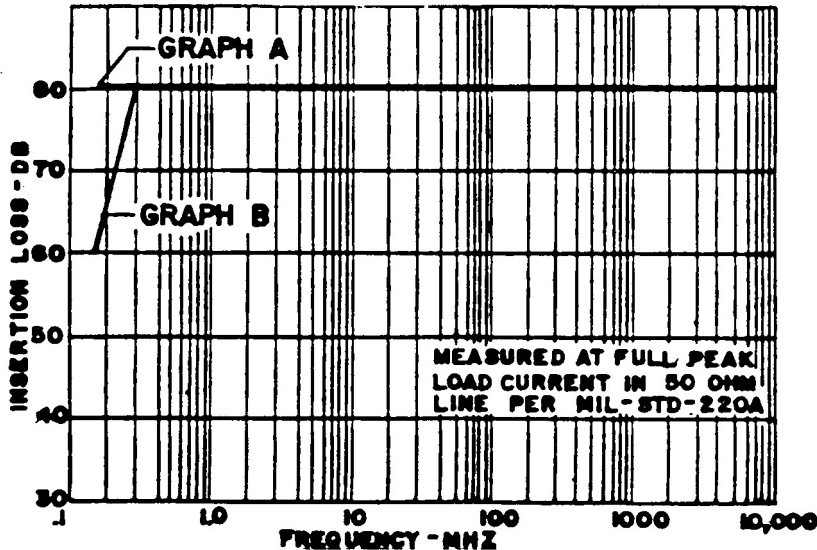
Triple Circuit QPL to MIL-F-15733/75

MIL-F-15733/75 DASH NO.	FIL-COIL PART NO.	CURRENT RATING (AMPS)	±.03 A	±.03 B	±.03 C	±.02 D	±.015 E	±.03 F	TERMINAL THREAD SIZE	INSERTION LOSS GRAPH
-0010	FC-1220-10	3 x 3	1.13	3.38	3.58	2.875	.625	2.00	8-32UNC-2A	B
-0011	FC-1220-11	3 x 3	1.50	4.50	4.94	4.000	1.000	3.00	8-32UNC-2A	A
-0012	FC-1220-12	3 x 5	1.25	3.75	4.71	3.250	.750	2.50	8-32UNC-2A	B
-0013	FC-1220-13	3 x 5	1.50	4.50	5.57	4.000	1.000	3.00	8-32UNC-2A	A
-0014	FC-1220-14	3 x 10	1.50	4.50	5.37	4.000	1.000	3.00	8-32UNC-2A	B
-0015	FC-1220-15	3 x 10	2.25	6.57	6.44	6.250	1.750	4.50	8-32UNC-2A	A
-0016	FC-1220-16	3 x 20	1.75	5.25	6.19	4.750	1.250	3.50	8-32UNC-2A	B
-0017	FC-1220-17	3 x 30	2.25	6.75	6.08	6.250	1.750	4.50	10-32UNC-2A	B
-0018	FC-1220-18	3 x 50	2.25	6.75	6.94	6.250	1.750	4.50	1/4-20UNC-2A	B



GRAPH A & B

MINIMUM INSERTION LOSS CHARACTERISTICS MIL-F-15733/75 FILTERS



NOTES:

1. Voltage Rating: 115VAC, 400VDC, 0-400Hz
2. Maximum Voltage Drop: 1% of rated voltage
3. Dielectric Test: 2.5X rated voltage
4. Operating Temperature: -55°C to +85°C
5. Bracket supplied with units over 6 inches long

